

ST Optical Fibre Adaptors

Optronics ST adaptors have high precision alignment sleeves for reliability and better reconnectability. ST adaptors come with a ceramic sleeve for the singlemode and phosphor bronze sleeve for the multimode. The housing is available in double D footprint type.

Features

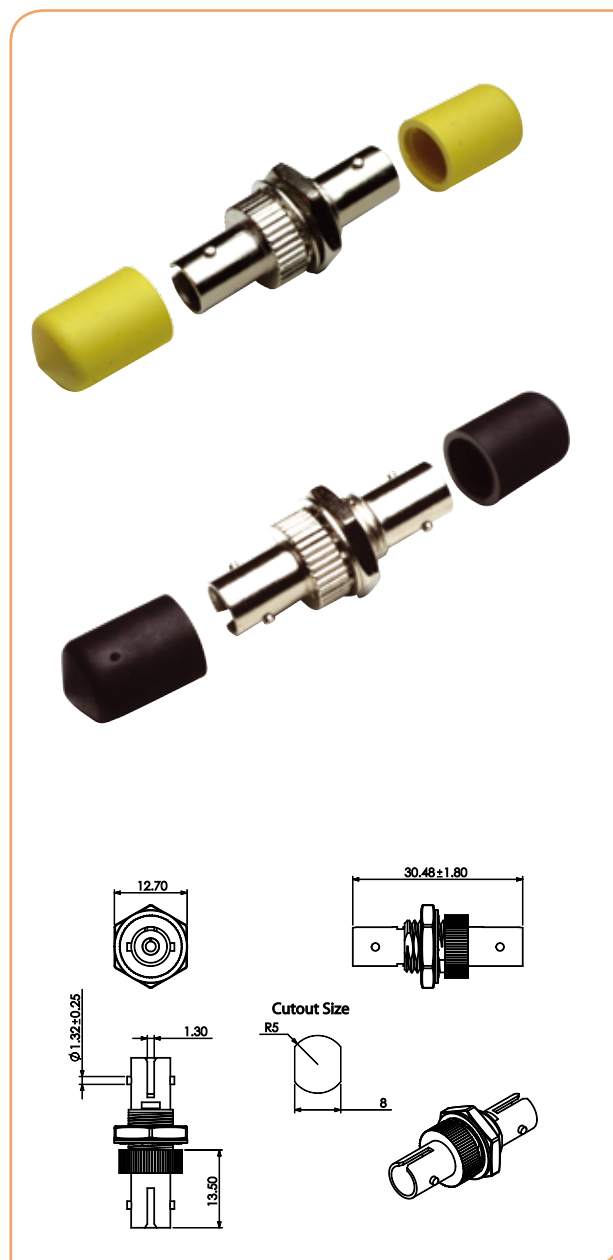
- > Complies with IEC 61754-2
- > Low insertion loss and high reconnectability capability
- > RoHS, REACH SvHC compliant
- > Available in simplex or duplex

Applications

- > Data processing networks
- > Premises distribution

Technical Specification

OPTICAL PERFORMANCE	CERAMIC	PHOSPHOR BRONZE	CONFORMANCE
Insertion Loss (Typ)	0.1 dB	0.15 dB	IEC 61300-3-4
Mating Durability	500		IEC 61300-2-2
Receptacle Retention force	1N - 2.5N		IEC 61754-20
Operating Temperature	-25 to +70°C, 12 cycles		IEC 61300-2-22



Ordering Information

MODE	TYPE		PART NO.
SM	PC	Simplex	STUZR02/Z
MM	PC	Simplex	STUPHBR/Z
SM	PC	Duplex	STUDZR02METAL/Z
MM	PC	Duplex	STUPHBRBEIGE/Z

LC Duplex Optical Fibre Adaptors

Optronics offers a range of quality LC adaptors which have high precision alignment sleeves for improved reliability and better reconnectability. The LC adaptors come with ceramic sleeves for singlemode and phosphor bronze sleeves for multimode. The housing is available in different colors with options for flange or flangeless body and metal or inbuilt clips.

Features

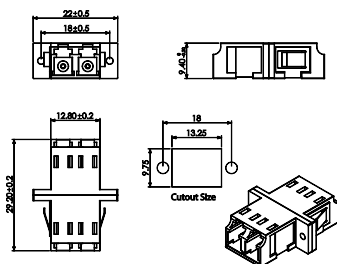
- > Complies with IEC 61754-20
- > High precision alignment sleeve
- > Low insertion loss and high reconnectability
- > RoHS, REACH SvHC compliant

Applications

- > Telecommunications networks
- > CATV, LAN, MAN and WAN application
- > Data processing networks
- > Cable television
- > Fibre-To-The-Home
- > Premises distribution

Technical Specification

	CERAMIC	PHOSPHOR BRONZE	CONFORMANCE
Insertion Loss (Typ)	0.1 dB	0.15 dB	IEC 61300-3-4
Mating Durability	500		IEC 61300-2-2
Receptacle Retention Force	1N - 2.5N		IEC 61754-20
Operating Temperature	-25 to +70°C, 12 cycles		IEC 61300-2-22



Ordering Information

MODE	TYPE	COLOUR	PART NO.	CONFIGURATION
SM	APC	GREEN	LCAPCUDGREEN/Z	Flange with two holes and SC footprint with metal clips
SM	PC	BLUE	LCDPXBLUE/Z	
MM	PC	BEIGE	LCDPXBEIGE/Z	
MM	PC	AQUA	LCDPXAQUA/S/Z	
MM	PC	ERIKA VIOLET	LCDPXEV/S/Z	

Part numbers for other style adaptors available on request



LC Quad Optical Fibre Adaptors

Optronics offers a range of quality LC adaptors which have high precision alignment sleeves for improved reliability and better reconnectability. The LC adaptors come with ceramic sleeves for singlemode and phosphor bronze sleeves for multimode. The housing is available in different colours with options for flange or flangeless body and metal, or inbuilt, clips.

Features

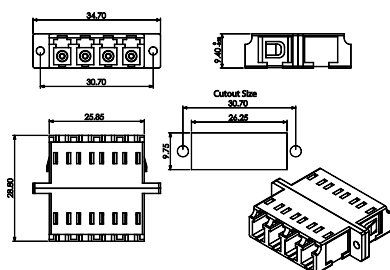
- > Complies with IEC 61754-20
- > High precision alignment sleeve
- > Low insertion loss and high reconnectability
- > RoHS, REACH SvHC compliant
- > Available in simplex, duplex and quad adaptors

Applications

- > Telecommunications networks
- > CATV, LAN, MAN and WAN application
- > Data processing networks
- > Cable television
- > Fibre-to-the-home
- > Premises distribution

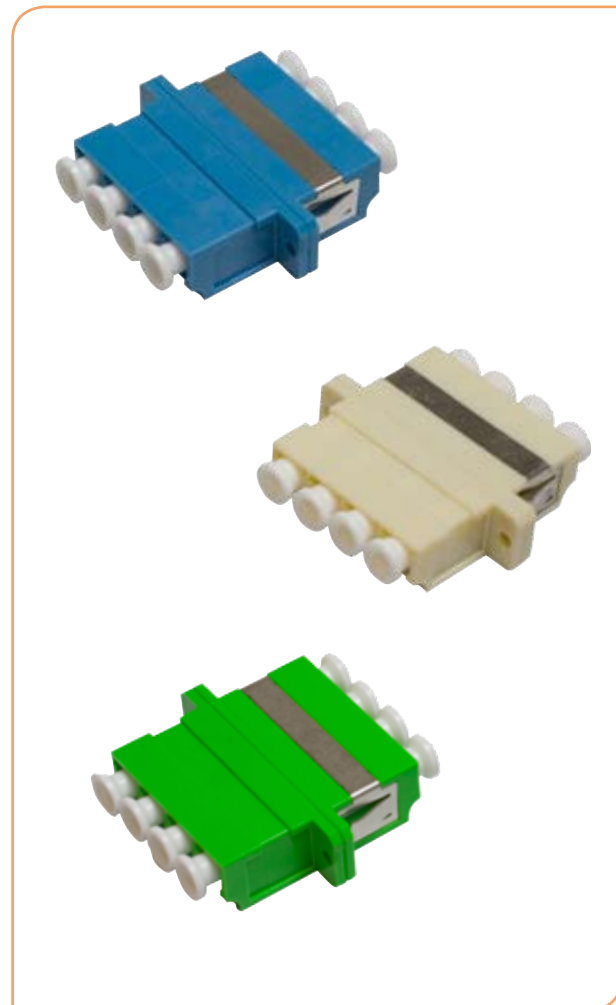
Technical Specification

	CERAMIC	PHOSPHOR BRONZE	CONFORMANCE
Insertion Loss (Typ)	0.1 dB	0.15 dB	IEC 61300-3-4
Mating Durability	500		IEC 61300-2-2
Receptacle Retention force	1N - 2.5N		IEC 61754-20
Operating temperature	-25 to +70, 12 cycles		IEC 61300-2-22



Ordering Information

MODE	TYPE	COLOUR	PART NO.	CONFIGURATION
SM	APC	GREEN	LCQUADGREEN-W/Z	Flange with two holes and SC footprint with metal clips
SM	PC	BLUE	LCQUADBLUE-W/Z	
MM	PC	BEIGE	LCQUADBEIGE-S/Z	
MM	PC	AQUA	LCQUADAQUA-W/Z	



SC Optical Fibre Adaptors

Optronics offers a range of high quality SC adaptors which have high precision alignment sleeves for reliability and improved reconnectability. For singlemode applications a ceramic sleeve is supplied to ensure a high precision alignment. For multimode applications a phosphor bronze sleeve is supplied. The housing is available in different colours with options for flange or flangeless body, metal clips or inbuilt clips

Features

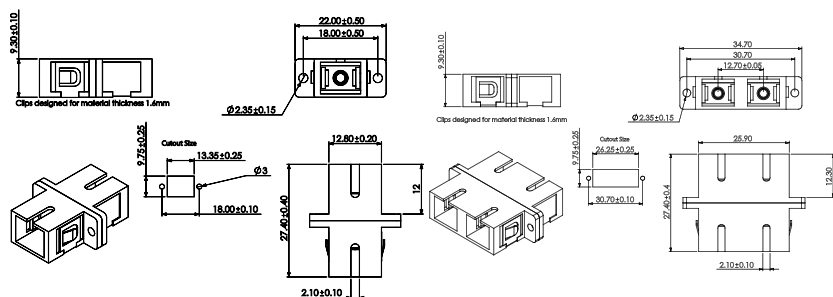
- > Complies with IEC 61754-4 and IEC 60874-14 standards
- > High precision alignment sleeve
- > Low insertion loss and improved reconnectability
- > RoHS, REACH SvHC compliant
- > Available in simplex and duplex adaptors
- > Also available are SC simplex adaptors with a shutter

Applications

- > Data centres, premise installations, telecommunication networks
- > Ethernet, fibre channel, ATM, LAN, MAN and WAN

Technical Specification

	CERAMIC	PHOSPHOR BRONZE	CONFORMANCE
Insertion Loss (Typ)	0.1 dB	0.15 dB	IEC 61300-3-4
Mating Durability	-	500	IEC 61300-2-2
Receptacle Retention Force	-	2N - 5.9N	IEC 61754-4
Operating Temperature	-	-25 to +70°C, 12 cycles	IEC 61300-2-22



Ordering Information

MODE	TYPE	COLOUR	PART NO.	
			SIMPLEX	DUPLEX
SM	APC	GREEN	SCAPCUSGREEN/Z	SCAPCUDGREEN/Z
SM	PC	BLUE	SCUSZR02/Z	SCUDZR02/Z
MM	PC	BEIGE	SCUSPHBRBEIGE/Z	SCUDPHBRBEIGE/Z
MM	PC	AQUA	SCSMPXAQUA/Z	SCDPXAQUA/Z



FC Optical Fibre Adaptors

Optronics offers a range of high quality FC adaptors featuring precision alignment sleeves for high reliability and better reconnectability. FC adaptors come with ceramic sleeves for singlemode and phosphor bronze sleeve for multimode. The housing has a metal body and a M8 nut.

Features

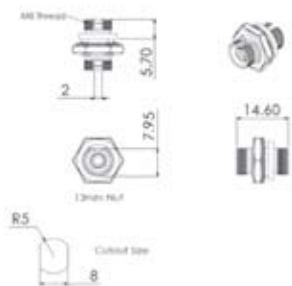
- > Complies with IEC 61754-13 and TIA 604-4-A
- > High precision alignment sleeve for low insertion loss
- > Low insertion loss and high reconnectability
- > Narrow key, 2.06mm for APC and PC connectors
- > RoHS, REACH SvHC compliant
- > Available in simplex only with DD footprint

Applications

- > Telecommunications networks
- > Local area networks
- > Data processing networks
- > Cable television
- > Premises distribution
- > Test and laboratory equipment
- > Industrial and military application

Technical Specification

	CERAMIC	PHOSPHOR BRONZE	CONFORMANCE
Insertion Loss (Typ)	0.1dB	0.15dB	IEC 61300-3-4
Mating Durability	500		IEC 61300-2-2
Receptacle Retention Force	2N – 5.9N		IEC 61754-13
Operating temperature	-25 to +70°C, 12 cycles		IEC 61300-2-22



Ordering Information

MODE	TYPE	MOUNT TYPE	PART NO.
SM	APC	DD	FCAPCUZRO2-DD/Z
SM	PC	DD	FCUZRO2-DD/Z
MM	PC	DD	FCUPHBR-DD/Z
SM	APC	SQUARE	FCAPCUZR02SQUARE/Z
SM	PC	SQUARE	FCUZR02SQUARE/Z
MM	PC	SQUARE	FCUPHBRSQUARE/Z



Hybrid Optical Fibre Adaptors

Optronics hybrid adaptors are used for mating 2 different style connectors. Optronics hybrid adaptors conform to international standards, are quality tested, and are available in singlemode, multimode and many different connector-type configurations.

Features

- > Complies with IEC, TIA/EIA, Telcordia standards
- > High precision alignment sleeve
- > Low insertion loss and high reconnectability
- > RoHS, REACH SvHC
- > Available in plastic or metal body

Applications

- > Telecommunications networks
- > Local area networks
- > Data processing networks
- > Cable television
- > Premises distribution
- > Test and laboratory equipment
- > Industrial and military applications



Technical Specification

	CERAMIC	PHOSPHOR BRONZE	CONFORMANCE
Insertion Loss (Typ)	0.1 dB	0.15 dB	IEC 61300-3-4
Mating Durability	500		IEC 61300-2-2
Receptacle Retention Force	2N – 5.9N		IEC 61754-13
Operating Temperature	-25 to +70°C, 12 cycles		IEC 61300-2-22

Ordering Information

Male to Female Adaptors

DESCRIPTION	PART NO.
SIMPLEX	
ADAPTOR HYB - LCFCA MALE TO FEMALE- ZR- SX - NO CLIP - STD	LCFCAMF09Z1N/Z
ADAPTOR HYB - LCSC MALE TO FEMALE- ZR- SX - NO CLIP - STD	LCSCMF09Z1N/Z
ADAPTOR HYB - LCSCA MALE TO FEMALE- ZR- SX - NO CLIP - STD	LCSCAMF09Z1N/Z
ADAPTOR HYB - SCFC MALE TO FEMALE- ZR- SX - NO CLIP - STD	SCFCMF09Z1N/Z
ADAPTOR HYB - SCLC MALE TO FEMALE- ZR- SX - NO CLIP - STD	SCLCMF09Z1N/Z
ADAPTOR HYB - SCLCA MALE TO FEMALE- ZR- SX - NO CLIP - STD	SCLCAMF09Z1N/Z
ADAPTOR HYB - FCSC MALE TO FEMALE- ZR- SX - NO CLIP - STD	FCSCMF09Z1N/Z
ADAPTOR HYB - FCLC MALE TO FEMALE- ZR- SX - NO CLIP - STD	FCLCMF09Z1N/Z
ADAPTOR HYB - STSC MALE TO FEMALE- ZR- SX - NO CLIP - STD	STSCMF09Z1N/Z
ADAPTOR HYB - STLC MALE TO FEMALE- ZR- SX - NO CLIP - STD	STLCMF09Z1N/Z
ADAPTOR HYB - E2SC MALE TO FEMALE- ZR- SX - NO CLIP - STD	E2SCMF09Z1N/Z
ADAPTOR HYB - E2LC MALE TO FEMALE- ZR- SX - NO CLIP - STD	E2LCMF09Z1N/Z
ADAPTOR HYB - E2SCA MALE TO FEMALE- ZR- SX - NO CLIP - STD	E2SCAMF09Z1N/Z
ADAPTOR HYB - E2LCA MALE TO FEMALE- ZR- SX - NO CLIP - STD	E2LCAMF09Z1N/Z

Female to Female Adaptors

DESCRIPTION	PART NO.
PC Simplex	
ADAPTOR HYB - SCST METAL BODY- ZR- SX - NO CLIP - STD	SCSTADSZ1NOMB-S/Z
ADAPTOR HYB - LCST METAL BODY- ZR- SX - NO CLIP - STD	LCSTADSZ1NOMB-S/Z
ADAPTOR HYB - FCSC METAL BODY- ZR- SX - NO CLIP - STD	FCSCADSZ1NOMB-S/Z
ADAPTOR HYB - LCSC METAL BODY- ZR- SX - NO CLIP - STD	LCSCADSZ1NOMB-S/Z
ADAPTOR HYB - FCLC METAL BODY- ZR- SX - NO CLIP - STD	FCLCADSZ1NOMB-S/Z
APC/APC Simplex	
ADAPTOR HYB - FCSC APC-METAL BODY- ZR- SX - NO CLIP - STD	FCSCADAZ1NOMB-S/Z
ADAPTOR HYB - LCSC APC-METAL BODY- ZR- SX - NO CLIP - STD	LCSCADAZ1NOMB-S/Z
ADAPTOR HYB - FCLC APC-METAL BODY- ZR- SX - NO CLIP - STD	FCLCADAZ1NOMB-S/Z
PC/PC Duplex	
ADAPTOR HYB - FCSC METAL BODY- ZR- DX - NO CLIP - STD	FCSCADSZ2NOMB-S/Z
ADAPTOR HYB - LCSC METAL BODY- ZR- DX - NO CLIP - STD	LCSCADSZ2NOMB-S/Z

E2000 Adaptors

FibreFab offers a range of high quality E2000 adaptors which have high precision alignment sleeves for reliability and better reconnectability. Each E2000 connector has an inbuilt mechanism to open the shutter and guide the ferrule in the alignment sleeve. E2000 adaptors come with a ceramic sleeves for the singlemode and phosphor bronze sleeves for the multimode. The housing is available in different colours and a flangeless body option.

Features

- Complies with IEC 61754-15
- High precision alignment sleeve
- Low insertion loss and high reconnectability
- RoHS, REACH SvHC compliant
- Available in simplex only

Applications

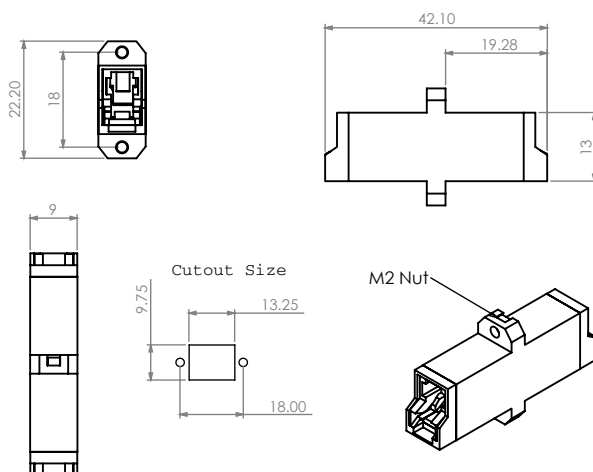
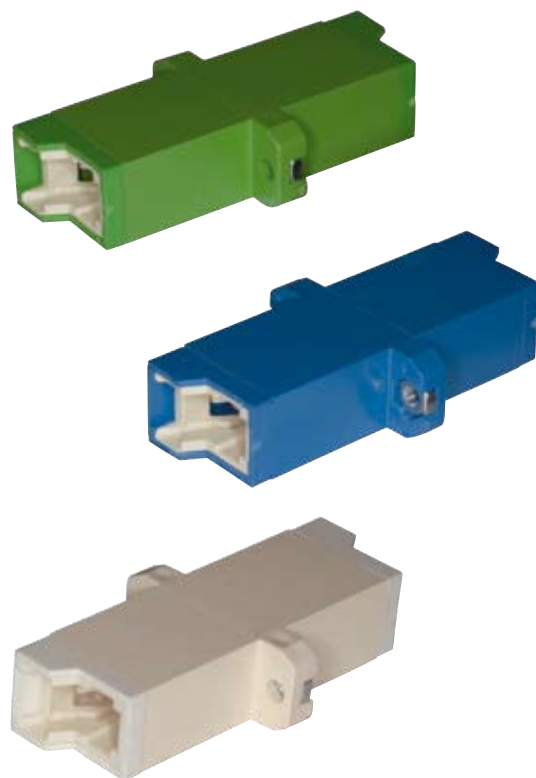
- Suitable for high power laser applications
- Telecommunications networks
- WDM, DWDM applications
- Testing and measurement equipment

Technical Specification

	Ceramic	Phosphor Bronze	Conformance
Insertion Loss (Typ)	0.1 dB	0.15 dB	IEC 61300-3-4
Mating Durability	500		IEC 61300-2-2
Receptacle Retention force	2N – 5.9N		IEC 61754-20
Operating temperature	-25 to +70, 12 cycles		IEC 61300-2-22

Ordering Information

Mode	Type	Colour	Simplex	Configuration
SM	APC	Green	E2APCUGREEN	Flange with two holes and SC footprint
SM	PC	Blue	E2UBBLUE	
MM	PC	Beige	E2UBEIGE	
SM	APC	Green	E2APCUGREEN/FL	Flangeless with SC footprint
SM	PC	Blue	E2UBBLUE/FL	
MM	PC	Beige	E2UBEIGE/FL	



MTRJ Adaptors

Optronics offers a choice of MTRJ adaptors for alignment of the MTRJ connectors.

In the case of the MTRJ system the alignment is carried out by two small pins fitted to one of the connectors and the adapter is designed to support and lock the connectors. When joining MT-RJ connectors, one connector must always be male with pins and one must be female without pins.

Features

- ▶ Plug-jack (RJ-45) design
- ▶ TIA/EIA568-A Compliant
- ▶ Precision moulded for proper alignment
- ▶ Available in black and beige coloured body

Applications

- ▶ Gigabit Ethernet, Asynchronous Transmission Method (ATM)
- ▶ Premise installations
- ▶ Industrial and military applications

Technical Specification

	Singlemode	Conformance
Insertion Loss (Typ)	0.2dB	IEC 61300-3-4
Mating Durability	500 matings	IEC 61300-2-2
Receptacle Retention Force	2N - 5.9N	IEC 61754-13
Vibration Test	10 - 55Hz 0.75 amplitude	IEC 61300-2-1
Drop Test	Drop height 1m, 5 drops	IEC 61300-2-12
Operating Temperature	-25 to +70°C, 12 cycles	IEC 61300-2-22

Ordering Information

Type	Color	Part No.
MM	BEIGE	MTRJUNITER
MM	BLACK	MTRJ-BLK

