

## SDX Series

### Explosion-proof High Speed Dome Camera



#### MAIN FEATURES

304 or 316L Stainless Steel material

Explosion-proof certified:

ATEX II 2G Exd IIC T6, II 2D Ex t IIIC T80°C

IP 68 (2m/2h)

Standard fitted sunshield, heater, blower, bracket and explosion-proof power supply box

Pan Speed 0.2°~ 240°/s, Tilt Speed 0.2°~ 120°/s

Preset accuracy 0.02°

OSD menu function

8 programmable tracks, 3 scanning tracks

8-alarm input, 2-alarm relay output

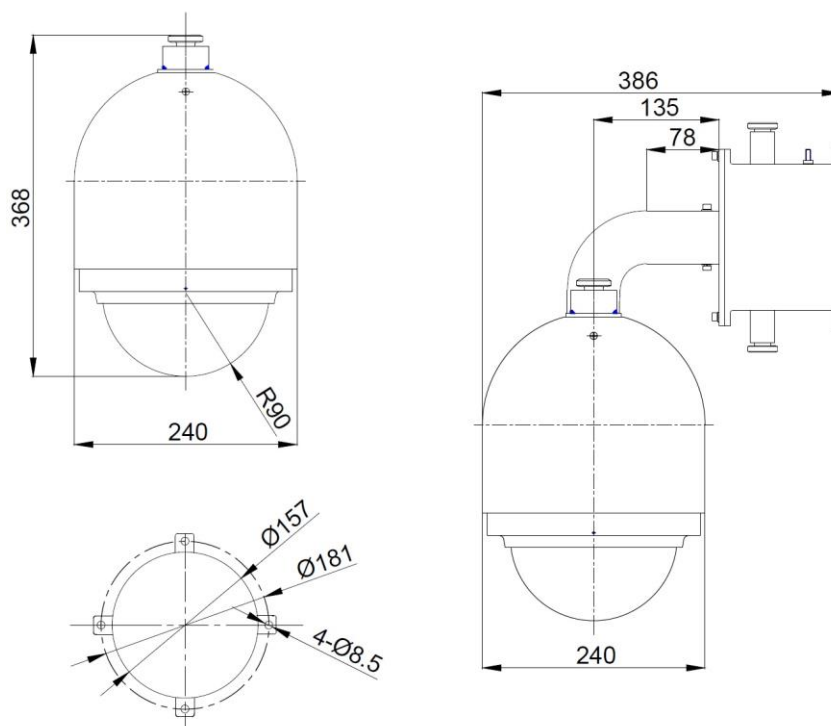
Built-in surge/lightning protector



SDX

SDX Series Explosion-proof High Speed Dome Camera is certified for application in hazardous area Zone 1 and Zone 2 that contained Group IIA, Group IIB and Group IIC flammable gases, and also hazardous area Zone 21 and Zone 22 that contained the mixture of flammable gas atmospheres and flammable mists or dusts. Its explosion-proof quality is in accordance with EN60079-0:2009, EN60079-1:2007, EN60079-31:2009 standard.

The high performance step motor used in SDX enables the maximum pan speed of 240°/s and tilt speed of 120°/s, without compensating the high preset accuracy of up to 0.02°. The On Screen Display (OSD) menu function shall enable ease of setup and easier remote setting of the camera by the operator.



Outline Dimensions

# SDX Series

## Explosion-proof High Speed Dome Camera



### TECHNICAL DATA

#### GENERAL

ATEX II 2G Exd IIC T6, II 2D Ex t IIIC T80°C

Ingress Protection IP68(2m/2hr)

Operating Temperature -40°C to 60°C

Relative Humidity 95%

#### MECHANICAL

304 / 316L Stainless steel material (please specify)

Overall dimension (WxHxD): 240×549×386mm (with wall bracket and integrated power supply box)

22.5kg weight (without camera module)

1×G3/4" Explosion-proof cable entry , inner hole Φ15mm

Pan Speed 0.2°~ 240°/s

Tilt Speed 0.2°~ 120°/s

Scanning / Auto Pan Speed 25°/s

Pan range 360° Continuously

Tilt range -2°~ 90° (180°Auto Flips)

Preset accuracy 0.02°

#### ELECTRICAL

Operating Voltage :

AC24V ~ AC260V 50/60Hz, DC24V (please specify)

≤500mA Current

#### TELEMETRY RECEIVER

RS-485 connection

2400/4800/9600/19200 bps Baud Rate

Pelco D and Pelco P (Please specify. Other protocols based on request.)

1-1023 dome address (soft address setting)

On Screen Display menu function

8 programmable tracks

3 scanning tracks

8 privacy zones (depending on camera used)

8 alarm input, 2 alarm relay output

128 preset (max)

#### STANDARD FITTED

Sunshield, thermostatically controlled heater, blower, wall bracket and integrated power supply box

#### OPTIONAL ACCESSORIES

FOSDX-SM, Built-in Optical Single Mode Transmitter

FOSDX-MM, Built-in Optical Multi Mode Transmitter